



Coddington Close, Ware SG12 9FN

£146,250 - representing 45% share of total value



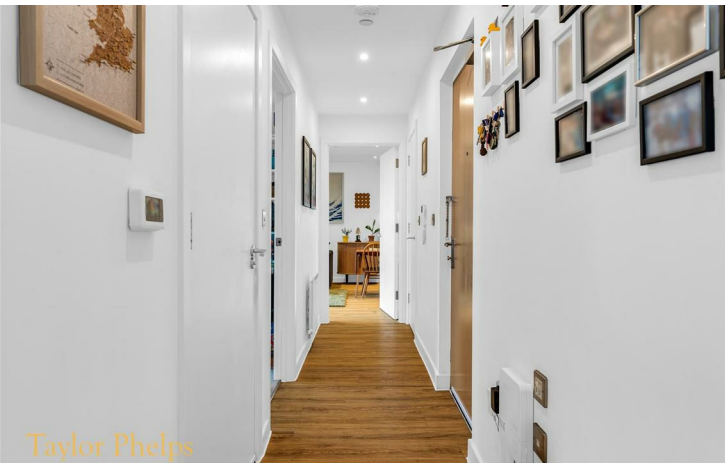
Taylor Phelps

Estate Agency

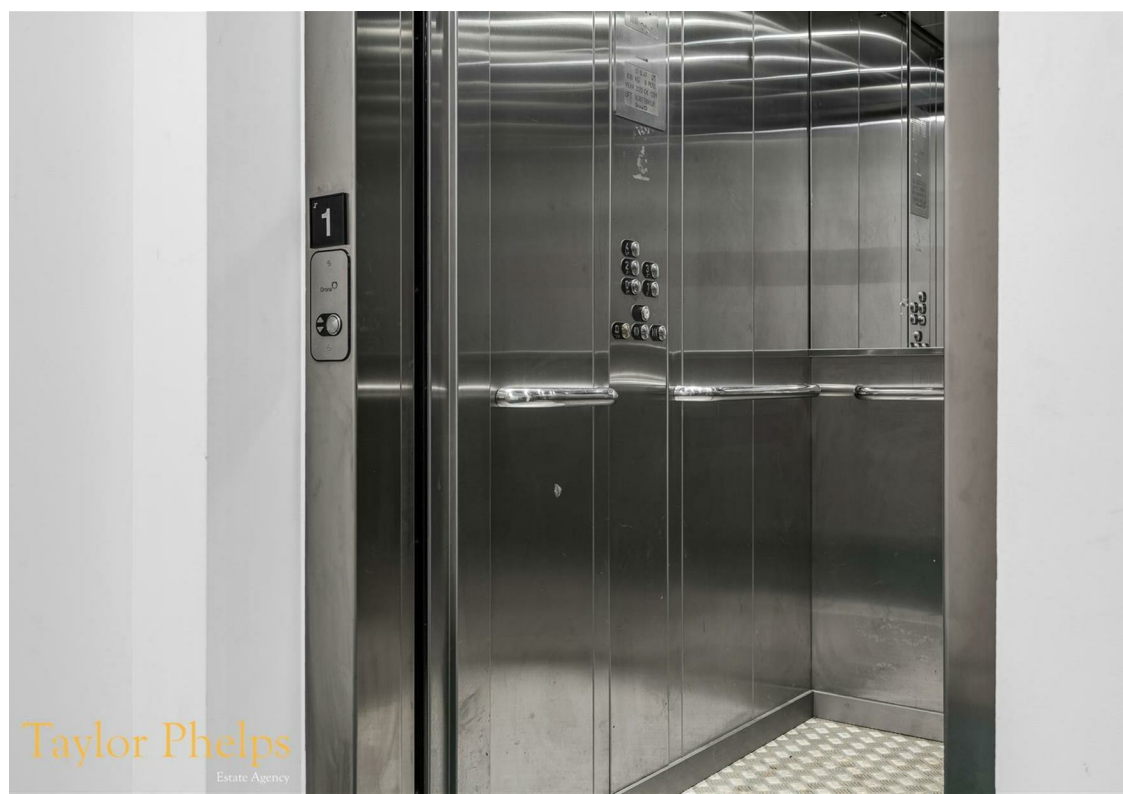
Taylor Phelps

Estate Agency

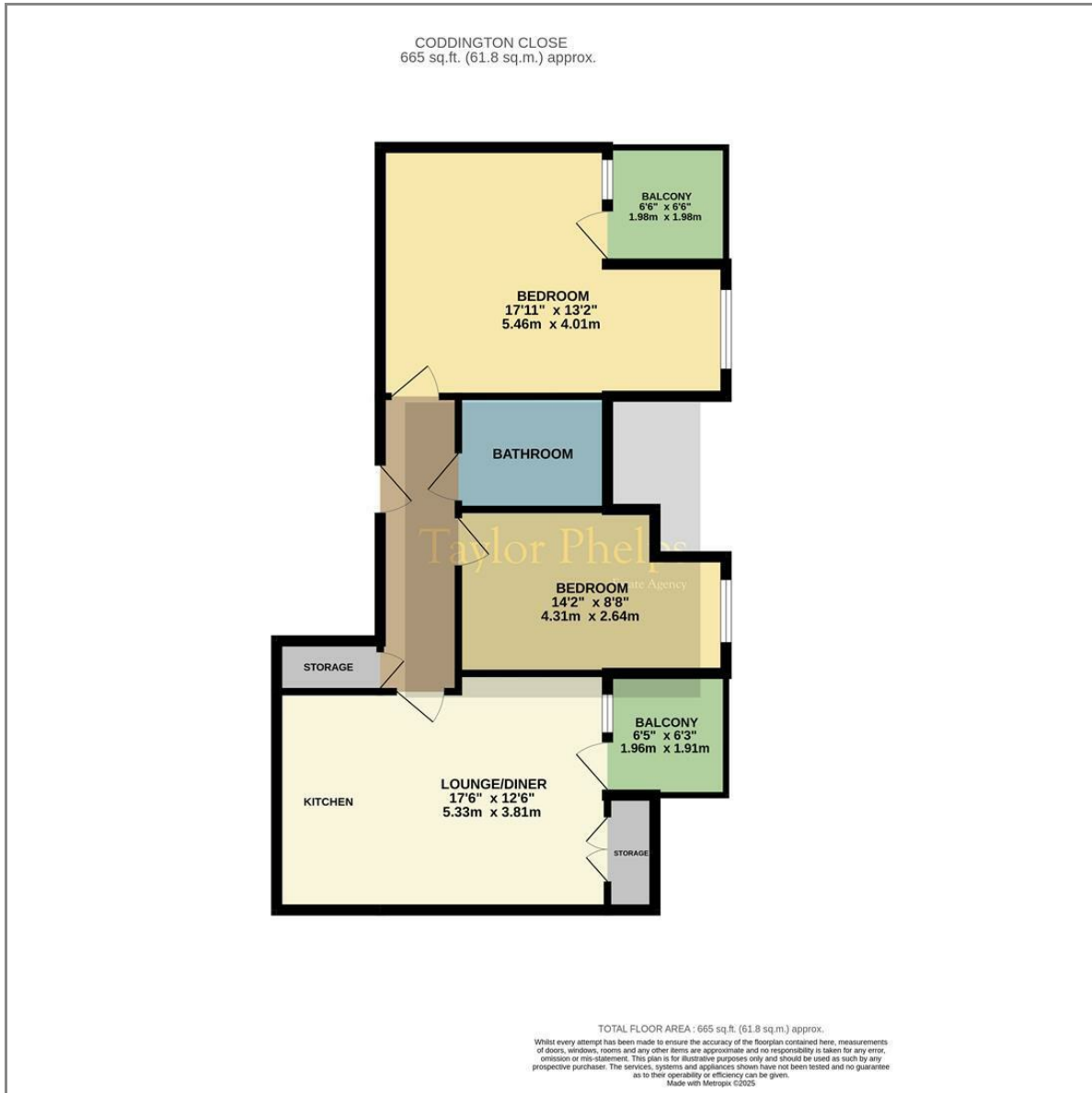
Available on the shared ownership scheme - Taylor Phelps are pleased to offer this superb, high spec, two bedroom apartment in Ware featuring two private balconies and close to the high street and station which serves both Herford East and London Liverpool Street! This larger style apartment further benefits from a modern open plan kitchen and luxury bathroom suite. This modern development further offers a lift to all floors and residents parking.



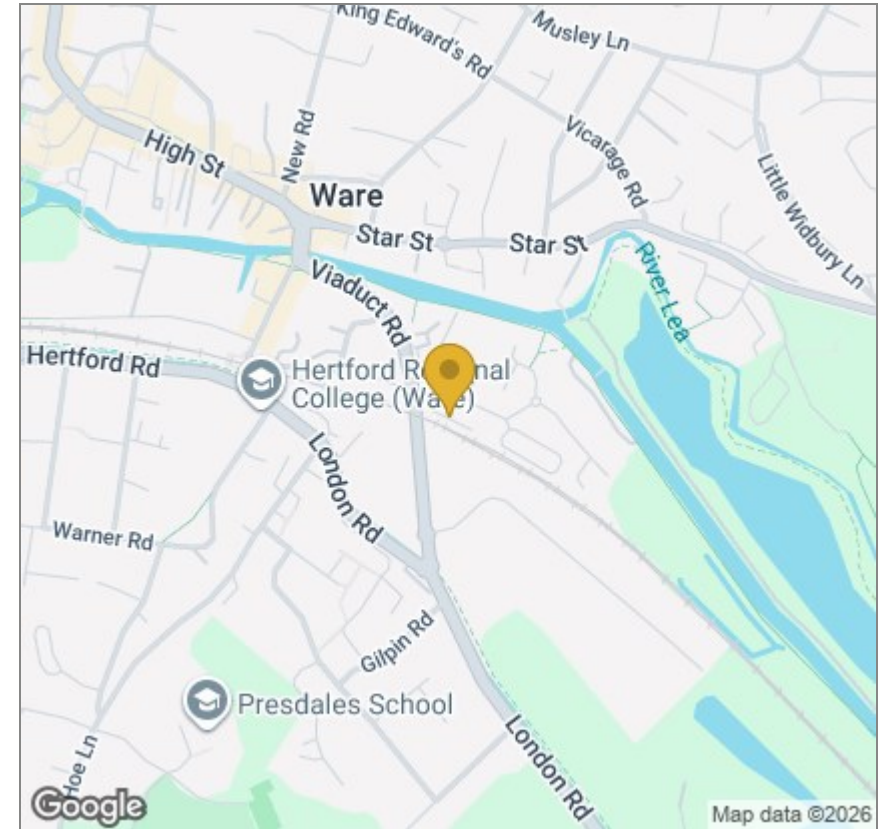




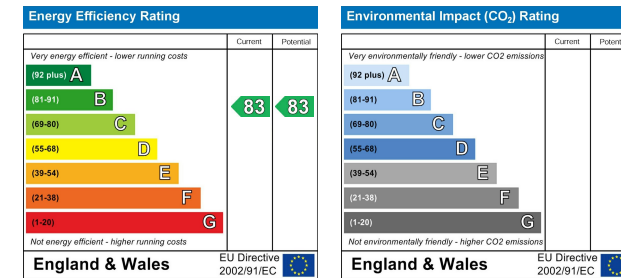
# Floor Plan



# Area Map



# Energy Efficiency Graph



These particulars, whilst believed to be accurate are set out as a general outline only for guidance and do not constitute any part of an offer or contract. Intending purchasers should not rely on them as statements of representation of fact, but must satisfy themselves by inspection or otherwise as to their accuracy. No person in this firm's employment has the authority to make or give any representation or warranty in respect of the property.

01920 459000

hello@taylorhelps.co.uk

5 Frenchs Yard, Amwell End, Ware, Hertfordshire, SG12 9HP

www.taylorhelps.co.uk

